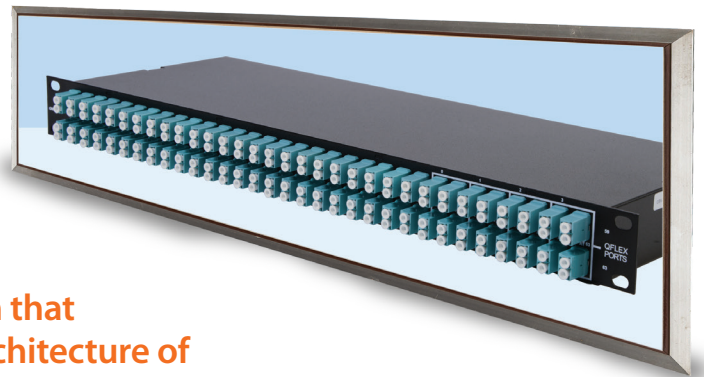


Simplify Cabling for the Brocade G620 with the CABLExpress® Port Replication Patch Panel



CBX-HRM-H0164LCAZ

A true “plug and play” patch panel solution that enhances the cost benefits and scalable architecture of the G620*, as well as integrating the benefits of structured cabling and port replication into the SAN.

Performance

The Brocade G620 is a lightning-fast switch, and the CABLExpress port replication patch panel has ultra-low optical loss. The premium performance of this patch panel allows the speeds of the G620 switch to run flawlessly. You simply won't throttle down the performance of the switch.

Scalability

The G620 reduces operating costs and management complexity by allowing you to add ports when you need them. The port replication panel enhances these benefits with one-to-one scalability. Each G620 can be matched with a patch panel – allowing you to pay as you grow!

Polarity

Our port replication patch panel is pre-wired to convert the G620 QFLEX MPO ports into duplex LC ports. This means no complicated and messy conversion harnesses.

Port Replication

Offers a direct one-to-one relationship between the ports on your hardware to the ports on the patch panel. This reduces the chance for patching errors, since the ports are numbered and oriented exactly the same. Your moves, adds, and changes become foolproof. No more referencing spreadsheets to determine the correlation of a port on the patch panel to the corresponding port on the switch.

Plug and Play

Since we have taken care of the polarity and performance, all you need to do is plug in your standards-based cables and you are up and running! If you don't have the necessary cables, just let us know – we provide those as well!

*Other makes and models this patch panel replicates:
IBM SAN64B-6, EMC DS-6620, and HPE SN6600B

CABLExpress®

A DIVISION OF CXTEC