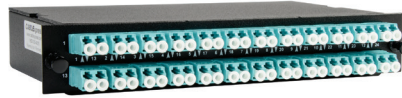


CABLExpress Easy Access (EA) Series Instructions



CBX-HE-EAH01
CABLExpress 1U 2 Slot H-Series Easy Access with rear manager



CBX-FE-EA1U4
CABLExpress 1U 4 Slot RSD Series Easy Access with rear manager

Multimode and singlemode modules and adapter panels are available in both H-Series and RSD Series Footprints.



Contents:

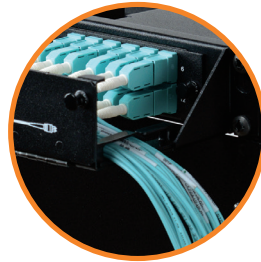
- (1) Enclosure
- (4) M6 Cage nuts and screws
- 8" Nylon zip ties:
 - (12) for 1U, (16) for 2U, (24) for 4U
- Flat-style hook and loop strips:
 - (8) for 1U, (16) for 2U, (30) for 4U
- (2) Flat 90-degree adhesive backed hook and loop strip
- (6) Flat adhesive backed hook and loop strip

Cabling your EA Series

- 1 Dress ½ of the cables to the right, ½ to the left



- 2 Use cable management clips on both sides of the cable manager.



- 3 Bundle each group of (12) with Velcro.



- 4 Allow 6-7" of travel for each bundle to allow for room when drawer opens and closes.

- 5 Bundle (with Velcro) all cables from each side for a clean appearance. Remove Velcro when changes need to be done.



Install the MTP connectors to the rear of the modules from the back of the enclosure.

You may also install the MTP ends from the front by feeding the MTP ends through the module opening and push module in carefully.

For best cable management results, it is highly recommended to use the CABLExpress 1U cable manager with hinged front door and CABLExpress Skinny-Trunk® 2mm round fiber jumpers.

Caution: Excessive pulling, bending, and crushing can damage fiber optic cable. Follow applicable TIA/EIA standards to avoid damage to fiber.

Beware of the dangers of invisible laser radiation. Do not look into unmated fiber connectors. Always cap unused fiber connections.

CABLExpress®

A DIVISION OF CXTEC